

# OPEN ROLLER 2.0 CABLE GUIDED SCREEN SYSTEM



MANUAL OR MOTORIZED SCREEN INSTALLATION INSTRUCTIONS

# TOOLS NEEDED AND PREPARATION

## TOOLS FOR ASSEMBLY

- Tape Measure
- Impact Driver
- Drill
- Levels
- Impact Bits
- 5mm Allen Wrench
- Swage Crimper
- Plumb Line
- Cable Cutter
- 7/16" Wrenches (2)

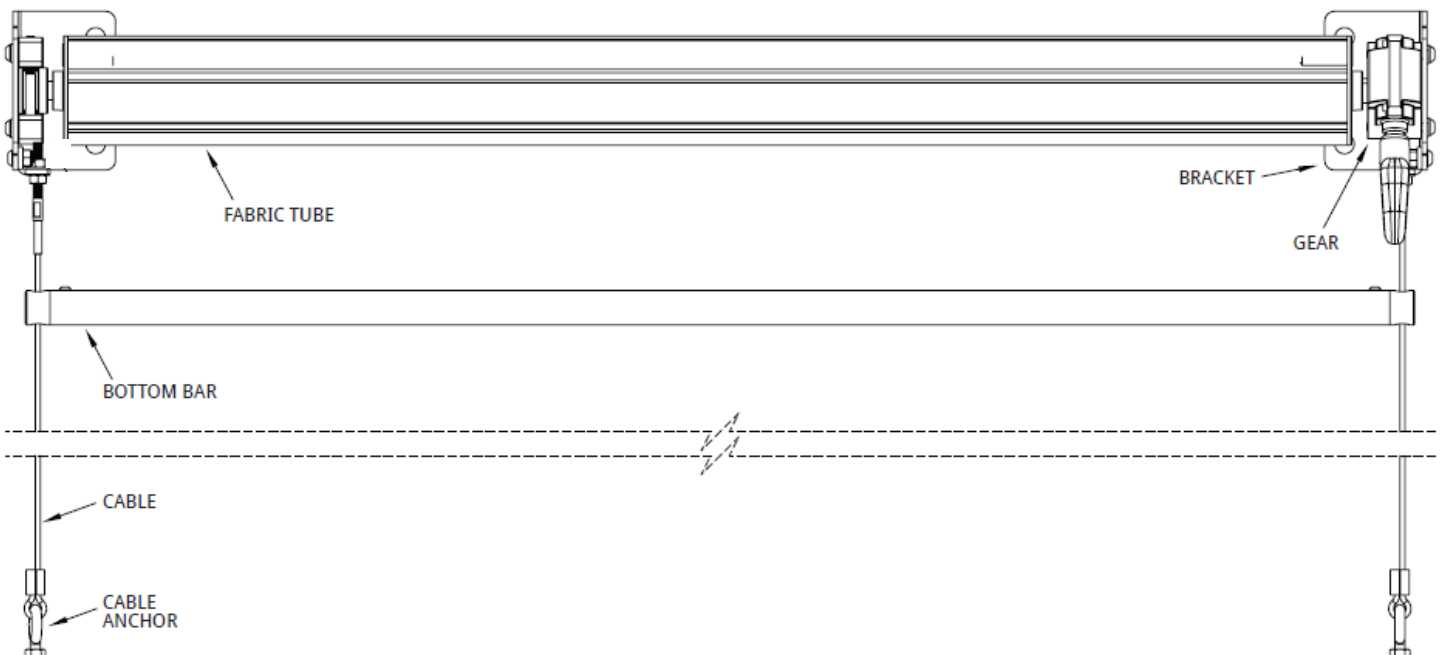
## HARDWARE PROVIDED

- Mounting Brackets (2)
- Gear (or Motor) Drive (1)
- Cable w/ Tension Bolt (2)
- Cable Swage Eye (2)
- Cable Anchor (2)
- Roll Tube (1)
- Screen Material (1)
- Bottom Bar Cable Guide (2)

## NOT PROVIDED

- 5/16x4 1/2" Bracket Lag Screws (or appropriate) (4)
- #8 x 3" Stainless Wood Screw (or appropriate) (4)

## COMPONENTS



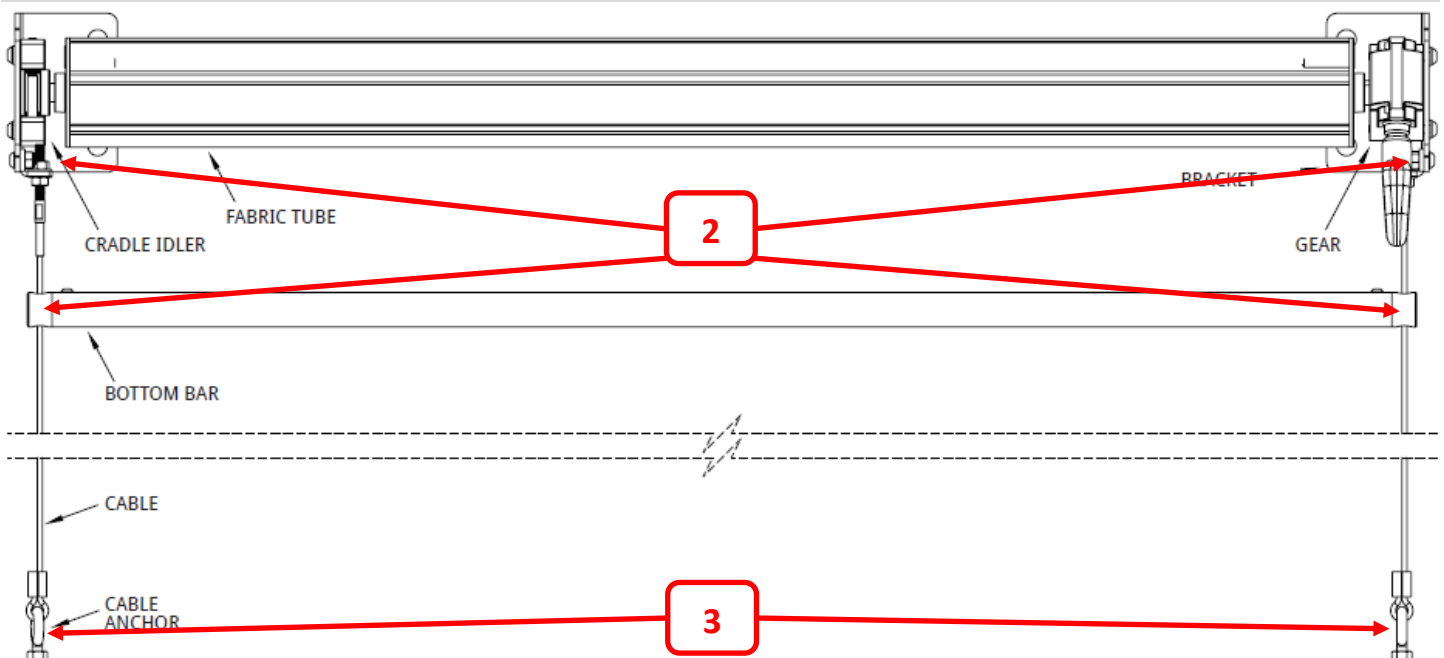
# STEP 1

## VERIFYING MEASUREMENTS

Screen measurements are as follows:

- 1) Mounting Width is measured from **outside** of bracket to **outside** of bracket
- 2) Verify upper cable mount width is the same as bottom bar cable guide holes
- 3) Lower cable mounts **MUST** be mounted plumb and equal distance as upper cable mount and bottom bar cable guide holes

### 1) Measurement is outside of bracket to outside of bracket



# STEP 2

## UPPER BRACKETS (FACE MOUNT)

- a) Mark outer edge bracket location at ordered width
- b) Use appropriate hardware (not provided) to mount and level Upper Brackets



Wood Lag

Self-Drilling Metal

Concrete Tapping (Tapcon)

## STEP 2

### UPPER BRACKETS (CEILING MOUNT)

- a) Mark outer edge bracket location at ordered width
- b) Use appropriate hardware (not provided) to mount and level Upper Brackets



Wood Lag

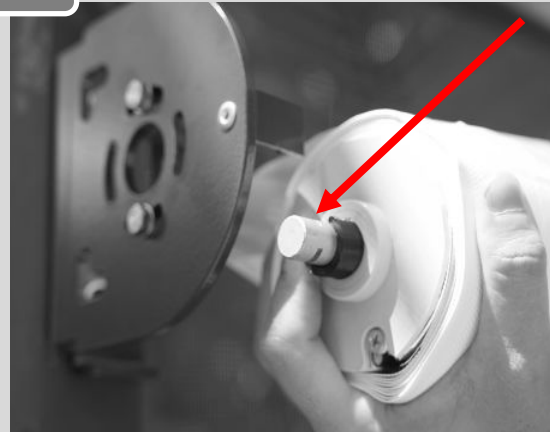
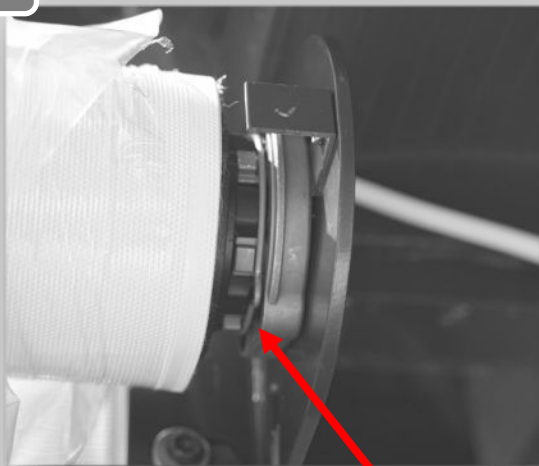
| Self-Drilling Metal

| Concrete Tapping (Tapcon)

# STEP 3

## INSTALL ROLL TUBE—MOTORIZED

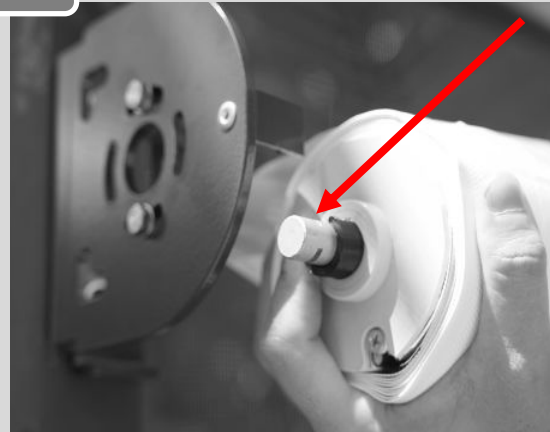
- a) Remove Idler Pin, Spacer and Clip from Bracket and place in idler
- b) Insert drive end into locking plate (motor clip)
- c) Slide idler pin into bracket and install hairpin clip



# STEP 3

## INSTALL ROLL TUBE—MANUAL GEAR

- a) Remove Idler Pin, Spacer and Clip from Bracket and place in idler
- b) Insert square drive end into manual gear drive
- c) Slide idler pin into bracket and install hairpin clip



# STEP 4

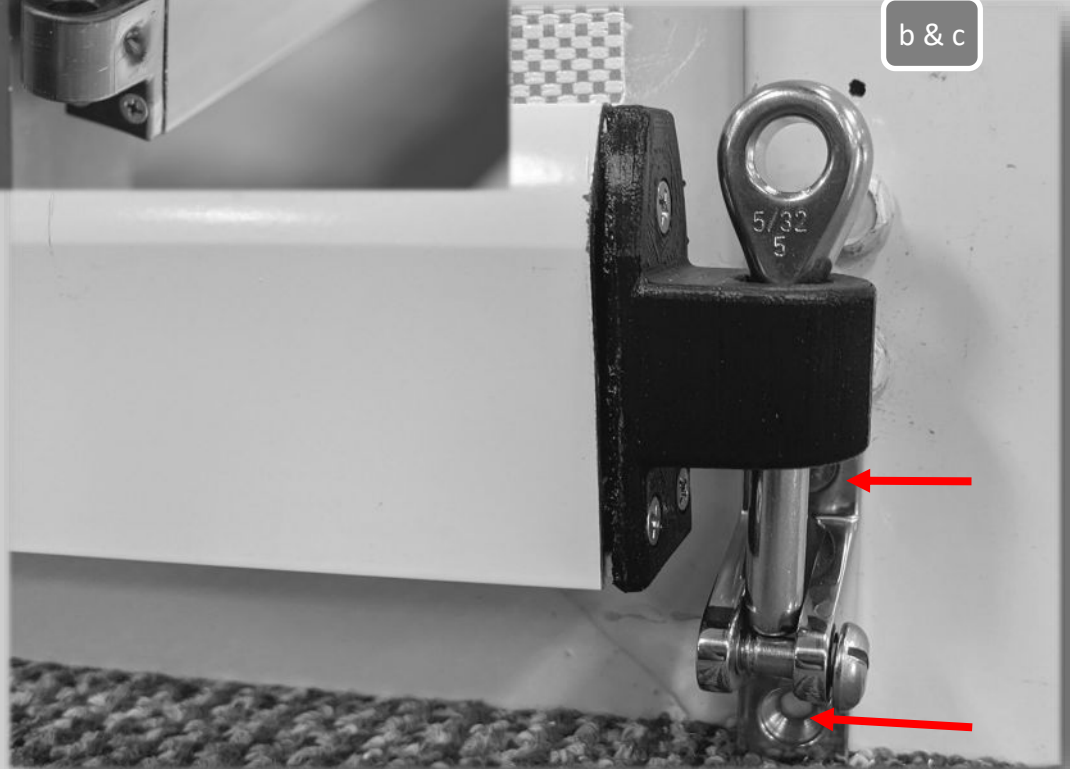
## LOWER CABLE BRACKETS

- a) Lower Screen and install the bottom bar cable guides
- b) Insert bottom cable swage eye down through the bottom bar cable guide to identify anchor point.
- c) Mark lower bracket mounting location (Lower bracket can be either wall or floor mounted)

a



b & c





# STEP 5

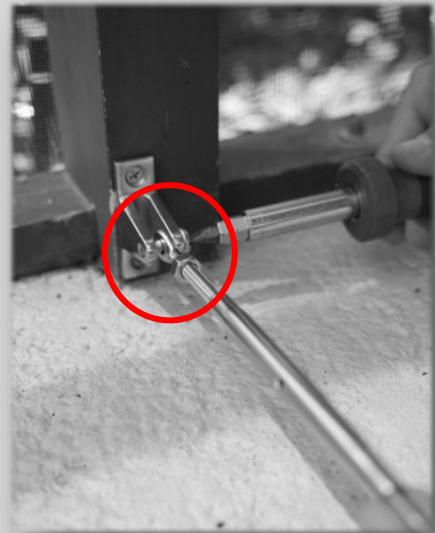
## LOWER BRACKET AND CABLE ASSEMBLY

- a) Install lower cable basket
- b) Temporarily install turnbuckle to lower cable basket
- c) From the inside of the bracket, install upper cable fitting in upper notch for wall mount, or rear notch for ceiling mount
- d) Route cable through bottom bar guide plug

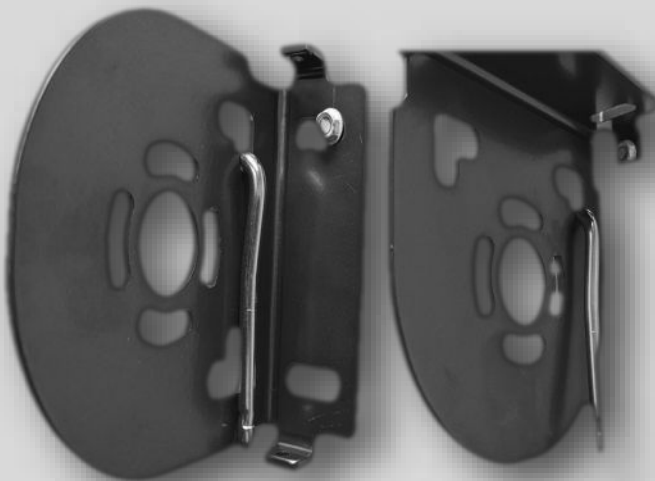
a



b



c



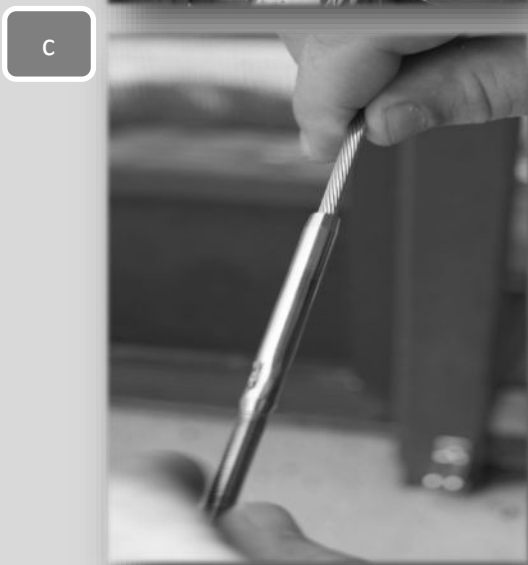
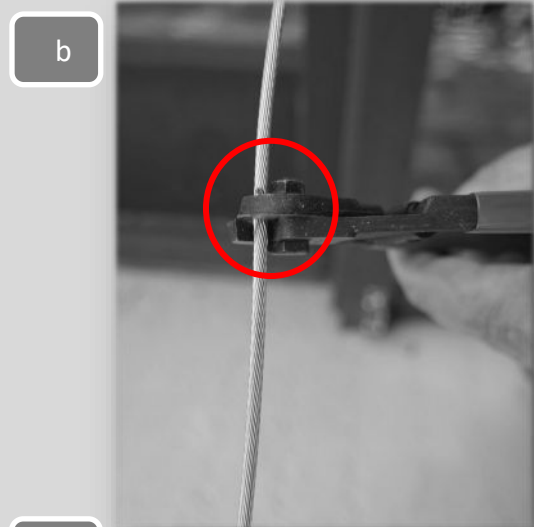
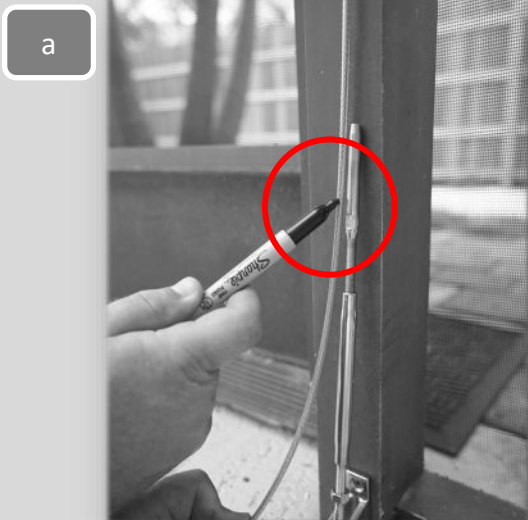
d



# STEP 5

## CABLE ASSEMBLY CONTINUED

- a) Loosen turnbuckle all the way, and mark desired cable length
- b) Cut cable with bypass cutters
- c) Install swage turnbuckle onto cable
- d) Crimp swage fitting with proper swage crimpers

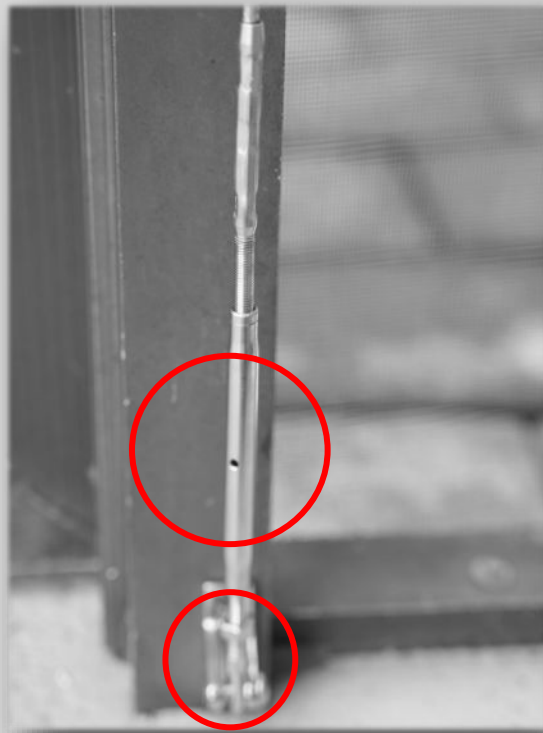


# STEP 6

## CABLE ADJUSTMENTS

- a) Reinstall turnbuckle and tighten to adjust the cable tension . Use the jam nut on bottom of turnbuckle to lock in place.

**\*\*\*Do NOT overtighten the cable tension\*\*\***



TEST FUNCTION

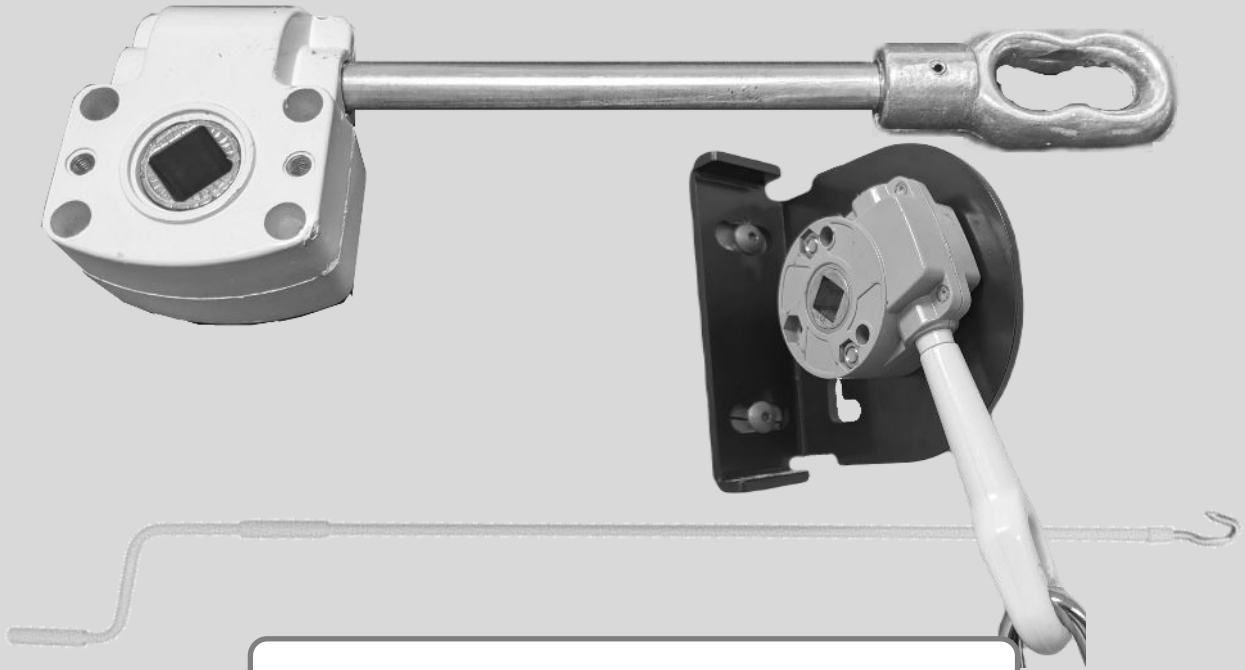
|

YOUR INSTALL IS NOW COMPLETE

# APPENDIX A

## DRIVE OPTIONS

Manual Drive—Only available in WHITE



MOTOR DRIVE



# APPENDIX B

## PARTS

Mounting  
Brackets



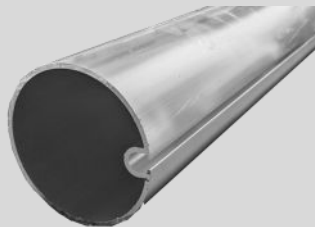
Motor  
Drive &  
Remote



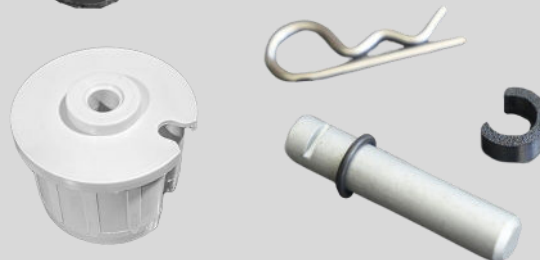
Manual  
Gear Drive



Roll Tube



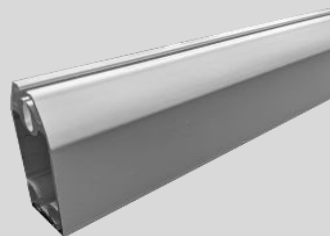
Roll Tube  
Idler & Pin  
Kit



# APPENDIX B

## PARTS (CONT.)

Bottom Bar



Bottom Bar  
Plug



Guide  
Cable Asm



Cable  
Thimble



Lower  
Cable  
Anchor

